



Alumni News

JULY

Welcome to the July edition of the KPMG New Zealand Alumni News

Here we have our latest news, publications, and events, which we hope will be of interest to you.

Introducing our new partners July 2021

KPMG New Zealand strengthens leadership capability across the firm with the appointment of two new partners.



Rachael Niao and Stephanie Ward join the partnership to build on our five partner appointments earlier this year - Sarah McGrath, Jodi Newth, Nick Moss, Leon Bowker, and Mike Lowe. Together these appointments strengthen KPMG's ambition to foster a partnership of diverse-thinking, industry-leading professionals, with a commitment to fuelling New Zealand's prosperity.

Rachael Niao – Technology Consulting Partner

Globally accomplished technology architect and digital strategist Rachael Niao has joined KPMG New Zealand, returning from working across Europe, Asia, and Australia. She also returns home to her Iwi; Ngati Awa, Tuhoë, Ngati Porou and Te Arawa.

Rachael's primary focus is on digital transformation. She is looking forward to helping New Zealand organisations navigate old systems into the digital world, using intelligent and emerging technologies to achieve an effective continuous improvement and innovation culture.

Rachael's experience has seen her lead numerous assurance and assessment engagements while gaining extensive experience developing digital strategies and roadmaps. She has also performed lead roles on sizable digital transformation programmes, including enterprise cloud, analytics, and mobility solutions.

Rachael is also deeply committed to inclusion and diversity, particularly with gender balance and the representation of minority groups. While in Asia Pacific and Europe, she has applied her experience working across cultures to generate better results for clients. She is excited to use the same philosophies to support and drive better outcomes for Māori.

Stephanie Ward – Deal Advisory Partner

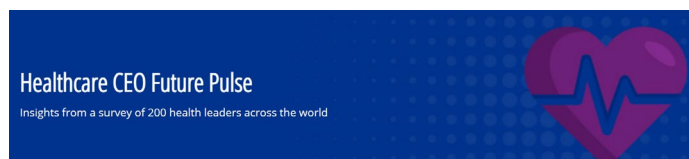
Based in the Auckland office, Stephanie brings both a global and local lens to developing solutions for New Zealand's complex infrastructure needs, having worked in Canada, the United Kingdom and New Zealand. Stephanie specialises in providing commercial and financial advice to central and local governments, focusing on infrastructure, urban development, and utilities, and working at the interface of the public and private sectors.

Prior to KPMG, Stephanie worked in commercial roles for the New Zealand Treasury and Her Majesty's Treasury in the United Kingdom, where she was involved in developing the world's first social impact bond. From there, she grew her interest in sustainable infrastructure. Since returning home, Stephanie has been applying her global experience to help make positive impacts on New Zealand cities, including work on the decarbonisation of the public bus fleet.

Read the official announcement by KPMG New Zealand Chief Executive, Godfrey Boyce [here](#).

2021 Healthcare CEO Future Pulse

Insights from a survey of 200 health leaders across the world



The inaugural Healthcare CEO Future Pulse offers insights across the industry's most pressing issues – the impact of COVID-19, workforce concerns, leadership, digital health use, partnerships, and shifting paradigms in the areas of patient centricity, care and delivery models.

While the health impact of the pandemic has been relatively low in New Zealand, these issues are wide-ranging and highly relevant to our healthcare sector. The future of healthcare continues to involve complex challenges which require holistic, forward-looking, and flexible leadership.

Understanding where global leaders are focusing their time gives an indication of where the industry will head next. Read our latest publication [here](#).

Get in touch with our team to explore how healthcare professionals can approach transformation head on.

Get in touch

[Rachel Scott](#)

Partner, Advisory

[Tony Evans](#)

Partner, Advisory

Social Procurement

Tackling the practical realities



Social procurement is about creating additional value out of your purchase of goods or services, whether that is environmental, social, or cultural. From finding the right suppliers to making this an integrated part of your procurement process, the task is not small, but its potential value is significant.

KPMG's latest report on 'Tackling the practical realities' shares insights on why now is the time to explore how procurement can provide broader value, and the foundations of a successful approach. It also explains why social procurement is a critical issue in Aotearoa, whether you're a procurement manager or in the boardroom. Read our Social Procurement report [here](#).

Get in touch

[Mair Brooks](#)

Partner, Advisory

[Riria Te Kanawa \(Missy\)](#)

Director, National Māori Sector Lead

Through a new lens

Evolving Asset Management Regulation report



Ongoing concerns about stability in the capital markets, with threats from COVID-19 to climate change, are causing regulators across the globe to reassess risks and redefine what resilience looks like. So much is changing that some regulators are even having to restructure themselves in order to address new risks and opportunities.

Major topics impacting the asset management industry today include good governance, digital capability, climate change, hybrid working models, and changing investor demands with Sustainable Finance particularly high on the agenda for many countries.

Policymakers and the industry are looking at issues through a new lens, especially considering the Financial Sector (Climate-related Disclosures and Other Matters) Amendment Bill is not far away for New Zealand.

Read KPMG's latest edition of the Evolving Asset Management Regulation report [here](#).

Get in touch

[Darshana Elwela](#)

Partner, Tax

[Simon Wilkins](#)

Partner, Deal Advisory

New work visa policy deferred to 2022

Immigration New Zealand announces that the AEWV will be launched mid-2022



Immigration New Zealand have announced that the AEWV (Accredited Employer Work Visa) that was due to come into effect on 1 November this year, has been deferred and will now only be launched in mid-2022 – the date is to be confirmed.

However, there are other important changes to note. Read the latest update from our immigration team [here](#).

If you need help please reach out to our team for an informal discussion [here](#).

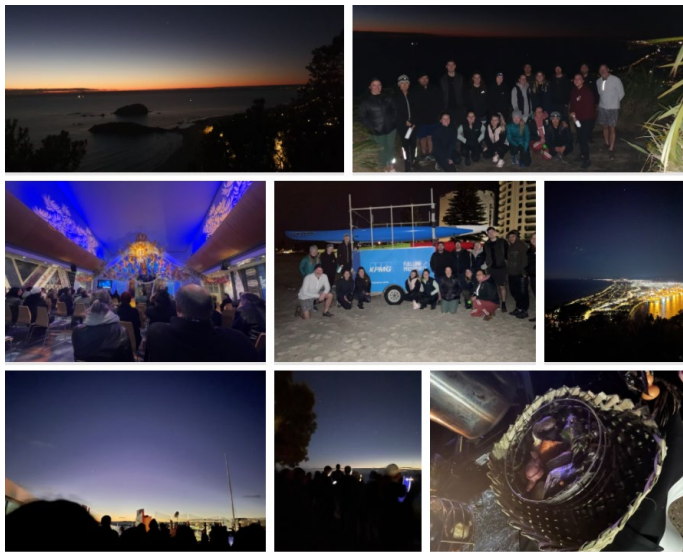
Community @ KPMG

Mānawatia a Matariki - Celebrate Matariki



This year, KPMG opened celebrations to mark Matariki, the Māori New Year, with karakia, star gazing and waiata.

Organised by KPMG's Kiwa teams across the motu, staff from all backgrounds gathered in their respective regions to celebrate the rising Matariki star constellation.



Our team in Tauranga walked up Mauao (Mt Maunganui) at dawn for karakia and star gazing, finishing off with kōrero and coffee at the base.

Our Wellington team held a 3-5 Training Session (Hiwa-i-te-rangi) as well as a Fish n Chips Matariki themed event. Our Auckland Kiwa team hosted a session to share the story of Matariki: what it is, its significance, and how it's celebrated with Paramanawa (light Māori kai) as well as organising a Matariki-themed hāngī event complete with a performance from the KPMG Kapa Haka group.

KPMG also held a Poi Yeah Matariki Poi making workshop as well as a nationwide Matariki Quiz to raise awareness.

Matariki is an opportunity to celebrate, remember and honour diversity, culture, and combined history.

Mānawatia a Matariki

Auditing, Rugby, Community

Recently, Taylah Johnson, KPMG Auditor by weekday and Sky Sport commentator by weekend, became the first Pasifika woman to commentate a men's rugby test match.



Photo credit: RNZ

Sporting commentators in New Zealand have been challenged to lift their game and learn to pronounce Pacific Island names correctly. Taylah was praised for doing just that by Radio New Zealand (read the story [here](#)). Please join us in congratulating Taylah on this achievement!

Plastic free July

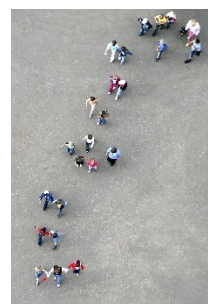


Communities around the globe are concerned about plastic ending up in landfill and polluting the oceans ... that's why 250 million people worldwide are choosing to be part of Plastic Free July.

[Plastic Free July](#) provides resources and ideas to help people reduce single-use plastic waste every day. KPMG took part in Plastic Free July 2021 by raising awareness and hosting events across our offices in New Zealand.

Our Green Team hosted lunch time workshops teaching staff to make their own reusable Beeswax Wraps to use as a plastic-free alternative to glad wrap and tin foil. The Green Team also hosted a EcoMatters Home Waterwise workshop, and a 'Bees Up Top' webinar.

Winter collection for Edmund Hillary School



Caren Donald, a manager leading the KPMG Immigration team, recently organised a winter collection to provide warm clothes for the tamariki at our partner school – [Edmund Hillary School](#).

This came as a great opportunity for our Auckland whanau to help those in need – and declutter at the same time. Caren was able to collect items in early July and deliver them to the school in time for winter.

Tax

BEPS 2.0 Agreement to tax multinationals

A landmark agreement, shepherded by the OECD, and signed by over 130 countries, to reform the international tax rules, will have significant implications for multinationals, Government, and tax authorities. The agreement sets out general principles, with much of the detail and how the changes will apply remains to be finalised, with a proposed timeline for countries to implement the necessary changes in 2022 for application in 2023. We expect as with other international tax measures that New Zealand will implement the agreement. Read more about the agreement and what this means for New Zealand in our latest Taxmail [here](#).

Reporting Updates

Amongst the topics covered in this issue, we look at the *Costs Necessary to Sell Inventories* and share an update on the *Preparation of financial statements when an entity is no longer a going concern* in the IFRIC's final agenda decision, in our Financial Reporting Update. In our Business Reporting updates, read our latest insights into the importance of the blue economy to all companies' ESG ambitions, and need for corporate transparency emphasized by the biodiversity crisis. Read our latest reporting updates [here](#).

We value your connection with us and invite you to visit our Alumni website periodically to stay abreast of all the latest news and happenings at KPMG New Zealand. Please reach out to us if you would like additional information regarding any of the above topics.



Aaron Woolsey

KPMG NZ Alumni Partner

kpmg.com/nz/en/home/alumni.html



[Legal](#) | [Privacy](#)

KPMG, 18 Viaduct Harbour Avenue, PO Box 1584, Auckland

© 2021 KPMG, a New Zealand Partnership and a member firm of the KPMG global organisation of independent member firms affiliated with KPMG International Limited, a private English company limited by guarantee. All rights reserved.

The information contained herein is of a general nature and is not intended to address the circumstances of any particular individual or entity. Although we endeavour to provide accurate and timely information, there can be no guarantee that such information is accurate as of the date it is received or that it will continue to be accurate in the future. No one should act upon such information without appropriate professional advice after a thorough examination of the particular situation.