



# KPMG Asset Management Platform

**Family Office**

Pioneering the  
automation of tax  
compliance and  
planning with  
innovative technology

[kpmg.com](https://www.kpmg.com)





## The demands on the chief tax officer are growing

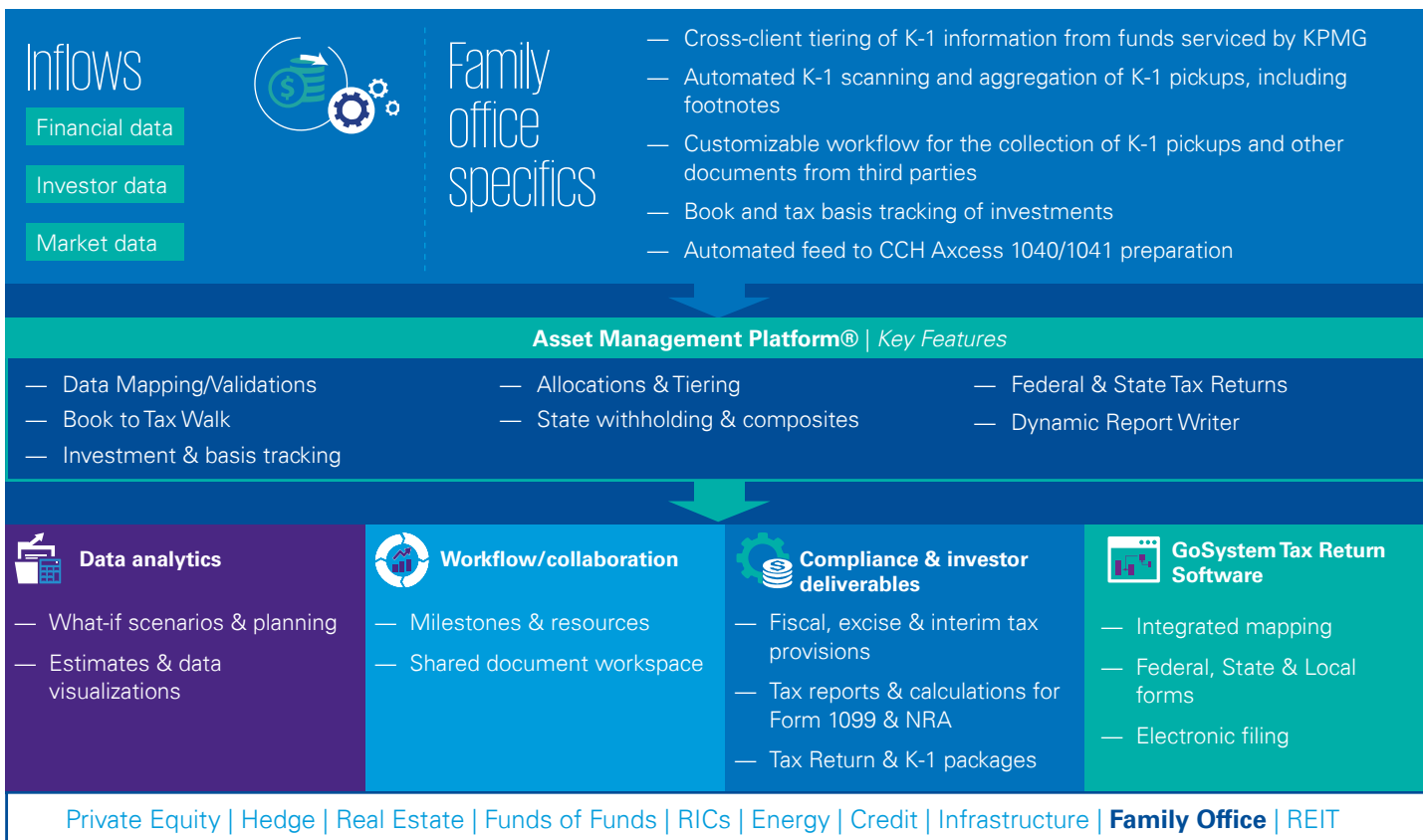
**and now technology is available to assist and enable significant improvements.**

KPMG's Asset Management Platform is leading-edge technology that can help you reimagine cost-effective, innovative ways to execute tax compliance and planning. Informed by our extensive, in-depth tax knowledge of pass-through structures, our Asset Management Platform enables efficiency and transparency, and helps normalize big data so you can save time, improve accuracy, and discover new tax value-adds for your organization:

- Complete transparency into the status of tax deliverables and the capability to drill-down into calculations (not a black box)
- Reduced risk of missing tax compliance and investor reporting deadlines
- Increased operational efficiencies across all aspects of tax compliance (data collection, updating investor/tax info, creating reports, and tax filings)
- Shared access for client, KPMG, and authorized third parties
- Reduced rework time and enhanced reporting derived from one tax technology platform supporting all major asset classes for both federal and state
- Improved decision support enabled by scenario planning, modeling, estimates, and data analytics
- Removal of constraints on business growth and profitability by replacing manual processes and legacy systems.

For additional information including a demonstration of KPMG's Asset Management Platform, take a tour of our interactive website at [visit.kpmg.us/AMP](https://www.kpmg.us/AMP). For insights from our Asset Management practice, visit us at [home.kpmg/us](https://www.kpmg.us).

# KPMG Asset Management Platform<sup>®</sup>



## Key system attributes

- Data/document sharing and collaboration
- Workflow/project task tracking
- Dynamic fund/organization chart generation
- Allocations from fund to partner level
- Automated tiering in multi-level structure
- Integrated federal and state calculations
- Powerful, easy-to-customize report writing
- Graphic data visualizations for decision support
- K-1 production and state withholding vouchers, and state composite workpapers
- Data extraction for electronic filing of federal and state tax returns

## Metrics that matter

KPMG's Asset Management Platform offers established performance and a depth of client engagement.



**1,240**

Total clients



**20,000**

Entities



**3,000**

External users



**\$150M+**

Investment to date



Over **8M**

K-1s generated in 2020



**7 years**

serving funds

# KPMG Asset Management Platform provides:

## Our people serving you

KPMG's Asset Management Platform, coupled with our tax experience serving partnerships, RICs, and REITs and executing consistent processes, can help keep your compliance, planning, and reporting on track.

The partners and professionals of KPMG's Asset Management Services practice have extensive experience helping numerous partnership, RIC, and REIT structures overcome their unique tax challenges. Working with our State and Local and Washington National Tax teams, we help you realize tax advantages and maintain compliance by adding clarity through:

- Modeling
- Transactions
- Entity formation structuring
- Tax planning
- Legislative and regulatory developments.

As part of the delivery model, a member of the tax technology team will be available to you throughout the transition planning, client onboarding, and service stages. Some of the key tasks that will be performed during your onboarding include:

- Understanding your current process, data, and systems
- Identifying key milestones to track
- Reviewing and importing your investor and entity data
- Reviewing system-generated fund/organization charts for accuracy
- Tailoring reports to serve your management team and investor demands.

## What-if scenario planning

Greenville Capital Fund I LP 2018 Estimate to Tax Returns Summary									
Partner	Actual			Estimate/Monthly/Total			Estimate/Monthly/Total		
	Ordinary Income	Capital Gains/Loss	Taxable Income	Ordinary Income	Capital Gains/Loss	Taxable Income	Ordinary Income	Capital Gains/Loss	Taxable Income
Total	9,812.41	131.21	4,702.22	9,812.41	131.21	4,702.22	9,812.41	131.21	4,702.22
Greenville Capital Fund I Investor LLC	38,070,706	1,279,151	40,349,857	38,070,706	1,279,151	40,349,857	38,070,706	1,279,151	40,349,857
Greenville Capital Fund I LP	44,833,529	1,330,341	46,163,870	44,833,529	1,330,341	46,163,870	44,833,529	1,330,341	46,163,870
LP Inv	24,024,920	787,402	24,812,322	24,024,920	787,402	24,812,322	24,024,920	787,402	24,812,322
LP Inv	19,070,202	542,940	19,614,920	19,070,202	542,940	19,614,920	19,070,202	542,940	19,614,920
One LP	38,407,878	1,237,902	39,645,780	38,407,878	1,237,902	39,645,780	38,407,878	1,237,902	39,645,780
One LP	32,276,510	1,033,458	33,310,000	32,276,510	1,033,458	33,310,000	32,276,510	1,033,458	33,310,000
Total	201,090,998	6,395,768	207,486,766	201,090,998	6,395,768	207,486,766	201,090,998	6,395,768	207,486,766

Greenville Capital GP I LP 2018 Estimate to Tax Returns Summary									
Partner	Actual			Estimate/Monthly/Total			Estimate/Monthly/Total		
	Ordinary Income	Capital Gains/Loss	Taxable Income	Ordinary Income	Capital Gains/Loss	Taxable Income	Ordinary Income	Capital Gains/Loss	Taxable Income
Total	21,567,211	844,491	22,411,702	21,567,211	844,491	22,411,702	21,567,211	844,491	22,411,702
Greenville Capital Fund I LP	21,567,211	844,491	22,411,702	21,567,211	844,491	22,411,702	21,567,211	844,491	22,411,702
One LP	21,567,211	844,491	22,411,702	21,567,211	844,491	22,411,702	21,567,211	844,491	22,411,702
One LP	21,567,211	844,491	22,411,702	21,567,211	844,491	22,411,702	21,567,211	844,491	22,411,702
Total	44,134,422	1,688,982	44,823,404	44,134,422	1,688,982	44,823,404	44,134,422	1,688,982	44,823,404

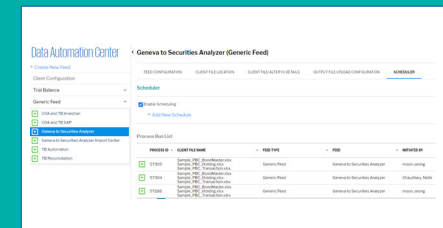
  

Greenville Co-Investors I LLC 2018 Estimate to Tax Returns Summary									
Partner	Actual			Estimate/Monthly/Total			Estimate/Monthly/Total		
	Ordinary Income	Capital Gains/Loss	Taxable Income	Ordinary Income	Capital Gains/Loss	Taxable Income	Ordinary Income	Capital Gains/Loss	Taxable Income
Total	23,784,494	730,443	24,514,937	23,784,494	730,443	24,514,937	23,784,494	730,443	24,514,937
One LP	23,784,494	730,443	24,514,937	23,784,494	730,443	24,514,937	23,784,494	730,443	24,514,937
One LP	23,784,494	730,443	24,514,937	23,784,494	730,443	24,514,937	23,784,494	730,443	24,514,937
Total	47,568,988	1,460,886	49,029,874	47,568,988	1,460,886	49,029,874	47,568,988	1,460,886	49,029,874

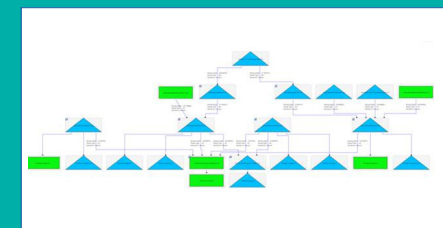
## Business intelligence



## Data Automation



## Multilevel tiering and complex allocations



## Contact us

### **Brad Sprong**

#### **Partner, Tax**

**T:** 816-802-5270

**E:** bsprong@kpmg.com

### **Charles Ferentinos**

#### **Partner, Tax**

**T:** 201-307-8093

**E:** cferentinos@kpmg.com

Some or all of the services described herein may not be permissible for KPMG audit clients and their affiliates or related entities.

[kpmg.com/socialmedia](https://kpmg.com/socialmedia)



The information contained herein is of a general nature and is not intended to address the circumstances of any particular individual or entity. Although we endeavor to provide accurate and timely information, there can be no guarantee that such information is accurate as of the date it is received or that it will continue to be accurate in the future. No one should act upon such information without appropriate professional advice after a thorough examination of the particular situation.

© 2021 KPMG LLP, a Delaware limited liability partnership and a member firm of the KPMG global organization of independent member firms affiliated with KPMG International Limited, a private English company limited by guarantee. All rights reserved. The KPMG name and logo are trademarks used under license by the independent member firms of the KPMG global organization. NDP186894-1F